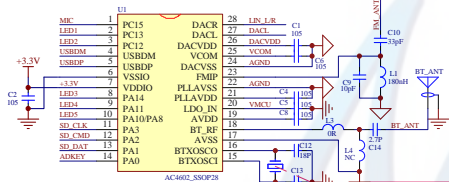
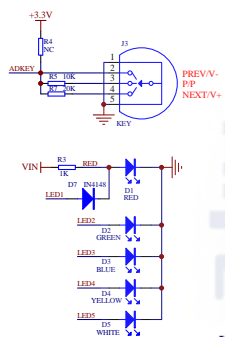
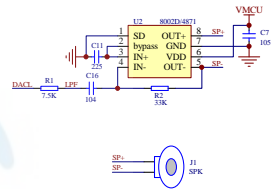
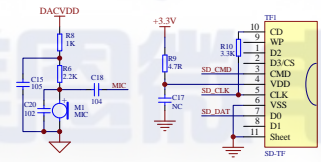
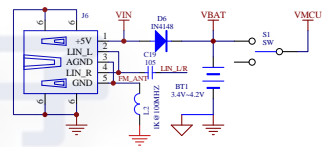


注：原理图中注释说明设计时需特别注意


晶振型号：
 封装：可兼容3225、M408、HC498等不同封装
 精度：±10ppm
 频率：11.059318MHz
 电容：电容C12/C13的大小根据所配晶振负载电容的大小决定，以实际测试为准。

MCU

Key, LED

MIC, TF-CARD

PA, Power